

Characteristics:

General Description: The D5293S is a relay module suitable for the switching of safety related circuits, up to SIL 3 level according to IEC 61508:2010 Ed.2, for high risk industries. It provides isolation between input and output contacts.

A wide compatibility towards different DCS/PLC is guaranteed: driving line pulse testing, executed by DCS/PLC, is permitted by a dedicated internal circuit, to prevent relay and LED flickering.

D5293S provides 1+1 SPST contact for normally energized load. SIL 3 Safety Function for NE load (de-energized in fail safe state) is available at Terminal Blocks 13-14.

When the driving signal is high (24 Vdc), the relay is energized (normal state), SIL 3 contacts at terminals 13-15 and 14-16 are closed, the load is energized.

The safety function is met when the driving signal is low (0 Vdc), the relay is de-energized (fail safe state), SIL 3 contacts at terminals 13-15 and 14-16 are open, the load is de-energized. Load is isolated from supply on both polarities: +/AC, -/AC.

Load and Line Diagnostic: Line and load short/open circuit detection is provided.

Load RMS voltage and current are measured by the module.

Load voltage and current can automatically be acquired from field.

User configurable limits set the minimum and maximum values of supply voltage (DC or AC) and load current.

The fault in the field is directly mirrored to the PLC DO: few systems may exceptionally require an external resistor at terminals 7 and 8.

All diagnostic conditions, that detect a fault on line and load, open the fault relay contacts and are also available from a RS485 Modbus output to identify any specific fault.

Diagnostic functions with fault relay NO contacts and RS485 Modbus output are SIL 2 rated according to IEC 61511.

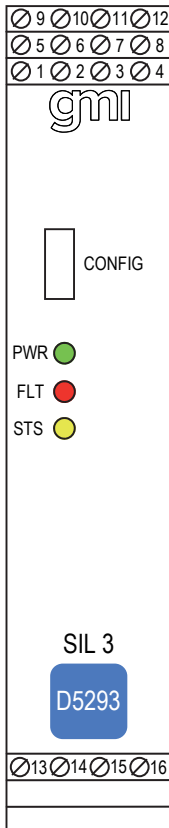
Mounting on standard DIN-Rail, with or without Power Bus, or on customized Termination Boards, in Safe Area / Non Hazardous Location or in Zone 2 / Class I, Division 2 or Class I, Zone 2.

Functional Safety Management Certification:

G.M. International is certified by TUV to conform to IEC61508:2010 part 1 clauses 5-6 for safety related systems up to and included SIL3.



Front Panel and Features:



- SIL 3 according to IEC 61508:2010 Ed. 2 for Tproof = 13 / 20 yrs (≤10% / >10 % of total SIF) for NE Load, PFDavg (1 year) 7.55 E-06, SFF 98.70%
- SIL 2 according to IEC 61511 for Tproof = 2 / 5 yrs (≤10% / >10 % of total SIF) for diagnostic with fault relay NO contact, with PFDavg (1 yr) 3.83 E-04, SFF 68.92 %
- SIL 2 according to IEC 61511 for Tproof = 5 / 10 yrs (≤10% / >10 % of total SIF) for diagnostic with RS485 Modbus out, with PFDavg(1 yr) E-04, SFF 73.64%
- Systematic capability SIL 3.
- Installation in Zone 2 / Division 2.
- Compatible with DCS/PLC pulse testing.
- Line and Load short/open circuit detection.
- The fault in the field is directly mirrored to the PLC DO.
- RMS voltage and load current measurement.
- Automatic acquisition of voltage and current values.
- 5 A SIL 3 contacts for NE load.
- 6 A inrush current at 24 Vdc / 250 Vac.
- Input/Output/Supply isolation.
- EMC Compatibility to EN61000-6-2, EN61000-6-4, EN61326-1, EN61326-3-1 for safety system.
- ATEX, IECEx, UL & C-UL, FM & FM-C, INMETRO, EAC-EX, UKR TR n. 898, NEPSI, TÜV Certifications.
- TÜV Functional Safety Certification.
- Type Approval Certificate DNV and KR for maritime applications.
- Simplified installation using standard DIN-Rail and plug-in terminal blocks, with or without Power Bus, or customized Termination Boards.

Ordering Information:

Model: D5293S

Operating parameters are programmable from PC by the GM Pocket Portable Adapter PPC5092 via USB serial line and SWC5090 Configurator software.

- Power Bus and DIN-Rail accessories:
- Connector JDFT050
 - Cover and fix MCHP196
 - Terminal block male MOR017
 - Terminal block female MOR022

Technical Data:

Supply: 24 Vdc nom (21.6 to 27.6 Vdc) reverse polarity protected, ripple within voltage limits ≤ 5 Vpp, 2 A time lag fuse internally protected.

Current consumption @ 24 V: 40 mA typical, with channel energized and no fault.

Power dissipation: 1 W typical.

Isolation (Test Voltage): Output/Input 2.5 KV; Output/Supply 2.5 KV;

Output/Fault Outputs 2.5 KV; Output/RS485 Modbus 2.5 KV;

Input/Supply 500 V; Input/Fault Output 1 500 V; Input/Fault Output 2 2.5 KV;

Input/RS485 Modbus 500 V; Supply/Fault Output 1 500 V;

Supply/Fault Output 2 2.5 KV; Supply/RS485 Modbus 500 V.

Input: 24 Vdc nom (21.6 to 27.6 Vdc) reverse polarity protected, ripple within voltage limits ≤ 5 Vpp.

Current consumption @ 24 V: 40 mA (with mirror and no fault).

Power dissipation @ 24 V: 1 W (with mirror and no fault).

Output: voltage free 1 + 1 SPST relay contact at terminals 13-15 and 14-16, opens when relay is de-energized (fail safe state), close in energized condition.

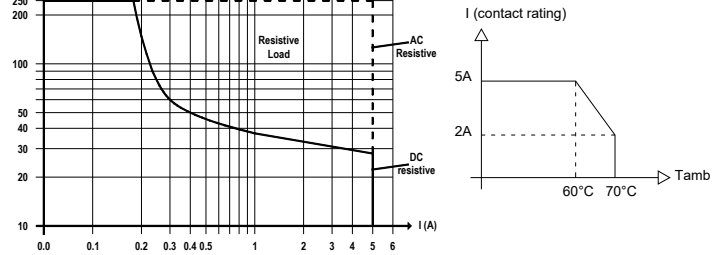
Contact material: Ag Alloy (Cd free), gold plated.

Contact rating: 5 A 250 Vac 1250 VA, 5 A 250 Vdc 140 W (resistive load).

Min. switching current 1 mA.

Contact inrush current: 6 A at 24 Vdc, 250 Vac.

DC Load breaking capacity:



Mechanical / Electrical life: 5 * 10⁶ / 3 * 10⁴ operation, typical.

Operate / Release time: 8 / 4 ms typical.

Bounce time NO / NC contact: 3 / 8 ms, typical.

Frequency response: 10 Hz maximum.

Fault detection: load and line short/open circuit monitoring

Short output detection: programmable load current (5 mA to 5 A typical).

Open output detection: programmable load current (5 mA to 5 A typical).

Fault signaling: voltage free NE 1 + 1 SPST relay contacts (closed in normal operation), output de-energized (with contacts open) in fault condition. Fault contacts can be reversed via software.

Fault 1 output rating: 500 mA 30 Vac 15 VA, 500 mA 50 Vdc 25 W (resistive load).

Fault 2 output rating: 3 A 250 Vac 750 VA, 3 A 125 Vdc 120 W (resistive load).

Response time: 3/4 sec typical.

Modbus Output: measure data, load and line diagnostic monitoring.

Modbus RTU protocol up to 115.2 Kbit/s with RS-485 connection on terminal blocks and Power Bus connector.

Terminating impedance: 100 Ω software selectable.

Transmission speed: 4.8, 9.6, 19.2, 38.4, 57.6, 115.2 Kbit/s.

Transmission cable length: ≤ 1200 m up to 93.75 Kbit/s, ≤ 1000 m up to 115.2 Kbit/s.

Compatibility:

CE mark compliant, conforms to Directive: 2014/34/EU ATEX, 2014/30/EU EMC, 2014/35/EU LVD, 2011/65/EU RoHS.

Environmental conditions:

Operating: temperature limits - 40 to + 70 °C, relative humidity 95 %, up to 55 °C.

Storage: temperature limits - 45 to + 80 °C.

Safety Description:

ATEX: II 3G Ex nA nC IIC T4 Gc

IECEx / INMETRO / NEPSI: Ex nA nC IIC T4 Gc

FM: NI / I / 2 / ABCD / T4, I / 2 / AEx nA nC / IIC / T4

FMC: NI / I / 2 / ABCD / T4, I / 2 / Ex nA nC / IIC / T4

EAC-EX: 2ExnAnCIIC T4 X.

UKR TR n. 898: 2ExnAnCIIC T4 X.

non-sparking electrical equipment. -40 °C ≤ Ta ≤ 70 °C.

Approvals:

BVS 10 ATEX E 114 conforms to EN60079-0, EN60079-15.

IECEx BVS 10.0072 X conforms to IEC60079-0, IEC60079-15.

INMETRO DNV 13.0109 X conforms to ABNT NBR IEC60079-0, ABNT NBR IEC60079-15.

UL & C-UL E477485 conforms to ANSI/UL508

FM 3046304 and FMC 3046304C conforms to Class 3600, 3611, 3810, ANSI/ISA-60079-0,

ANSI/ISA-60079-15, C22.2 No.142, C22.2 No.213, C22.2 No. 60079-0, C22.2 No. 60079-15.

C-IT.ME92.B.00206 conforms to GOST 30852.0, 30852.14.

CL 16.0036 X conforms to DCTY 7113, DCTY IEC 60079-15.

GYJ14.1406X conforms to GB3836.1, GB3836.8.

TUV Certificate No. C-IS-236198-04, SIL 3 conforms to IEC61508:2010 Ed.2.

TUV Certificate No. C-IS-236198-09, SIL 3 Functional Safety Certificate conforms to

IEC61508:2010 Ed.2, for Management of Functional Safety.

SIL 2 conforms to IEC 61511 for Line and Load Diagnostic Functionalities (Pending).

DNV Type Approval Certificate No.A-13625 and KR No.MIL20769-EL002 Certificates for

maritime applications

Patent No. 0001406495, released on 28/02/2014, valid for 20 years.

Mounting: T35 DIN-Rail according to EN50022, with or without Power Bus or

on customized Termination Board.

Weight: about 230 g.

Connection: by polarized plug-in disconnect screw terminal blocks to accommodate

terminations up to 2.5 mm².

Location: installation in Safe Area/Non Hazardous Locations or Zone 2, Group IIC T4

or Class I, Division 2, Group A,B,C,D, T4 or Class I, Zone 2, Group IIC, T4.

Protection class: IP 20.

Dimensions: Width 22.5 mm, Depth 123 mm, Height 120 mm.

Programming:

The module is fully programmable to set the operation parameters from PC by the GM Pocket Portable Adapter PPC5092 via USB serial line and SWC5090 Configurator software. Measured values and diagnostic alarms can be read on both serial configuration or Modbus output line.

Available diagnostic functions:

Load status	Load voltage	Load open circuit	Load short circuit	Load to earth leakage	Internal coil short
OFF	PF				
ON	PF	PF	PF		

F = available function

PF = available function with programmable thresholds

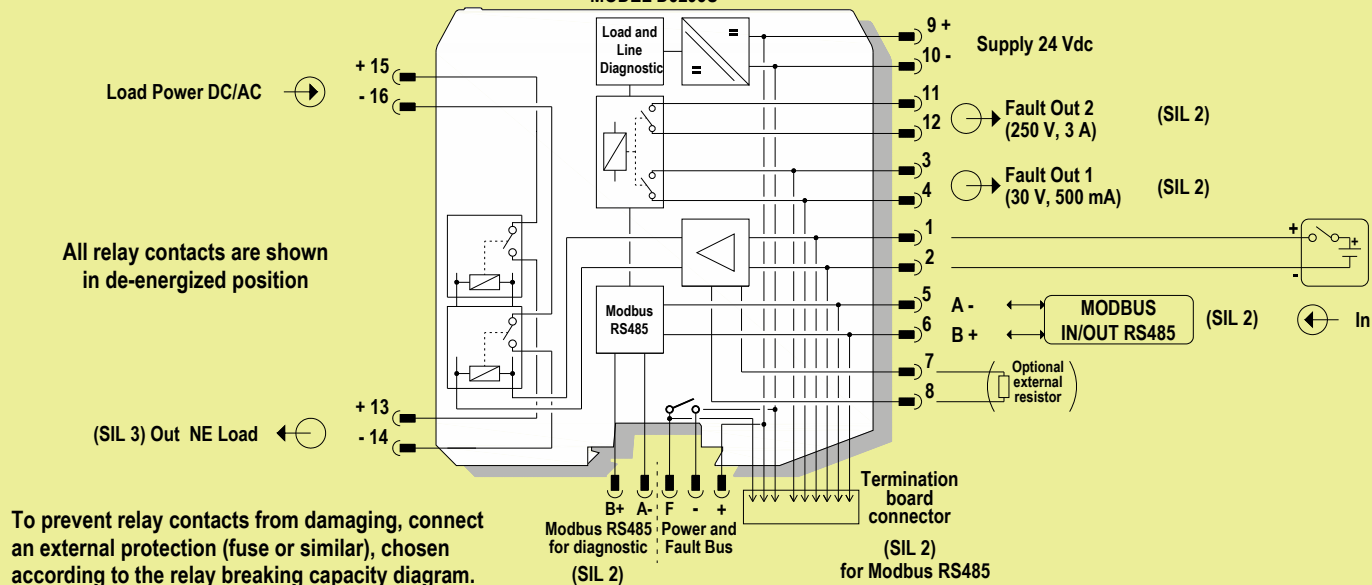
Image:



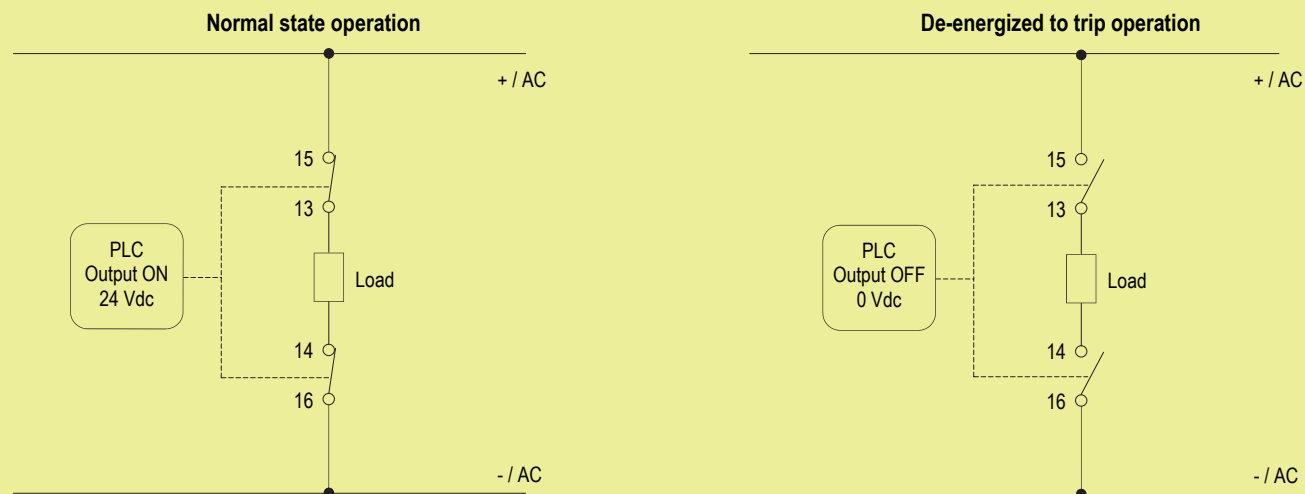
Function Diagram:

SAFE AREA, ZONE 2 GROUP IIC T4,
NON HAZARDOUS LOCATIONS, CLASS I, DIVISION 2,
GROUPS A, B, C, D T-Code T4, CLASS I, ZONE 2, GROUP IIC T4

MODEL D5293S



Application for D5293S - SIL 3 Load Normally Energized Condition (NE)



Contacts 13-15 and 14-16: in normal operation the relay is energized, contacts are closed, load is energized.

Contacts 13-15 and 14-16: the SIL 3 Safety Function is met when the relay is de-energized, contacts are open, load is de-energized.

Configuration parameters:

USER MANUAL SETTINGS:

Load Supply Voltage RMS

- Voltage Upper Limit (V): Maximum allowed load RMS voltage
- Voltage Lower Limit (V): Minimum allowed load RMS voltage

Load Current RMS

- Current Upper Limit (A): Maximum allowed load RMS current
- Current Lower Limit (A): Minimum allowed load RMS current

FAULT CONDITIONS MONITORING (Command Status [ON]): Faults contributing to the output cumulative fault when the driver is on.

FAULT CONDITIONS MONITORING (Command Status [OFF]): Faults contributing to the output cumulative fault when the driver is off.

- Load Supply Voltage: When checked, the load supply voltage can activate the cumulative fault.
- Load Current: When checked, the load current can activate the cumulative fault.

TAG: Identification of the specific operating loop of the module.

ACQUIRE FUNCTIONS: Acquisition and saving of the diagnostics field parameters.

- Acquire OFF parameters: The currently measured OFF parameters are copied to the USER MANUAL SETTINGS (available only when the driver is OFF).
- Acquire ON parameters: The currently measured ON parameters are copied to the USER MANUAL SETTINGS (available only when the driver is ON).

CONTINUOUS SCAN: Continuous measurement of the field parameters.

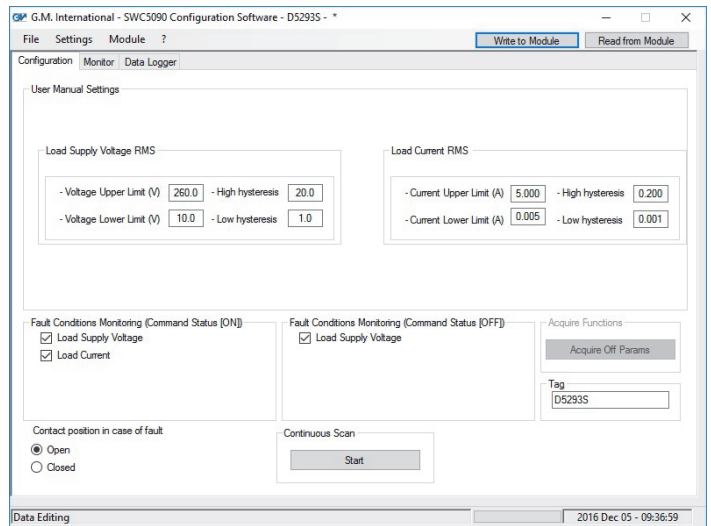
- Start/Stop: Activates/de-activates the measurement of the field parameters.

INVERT FAULT RELAY: When not checked, the output fault contacts open in case of fault. When checked, the output fault contacts close in case of fault.

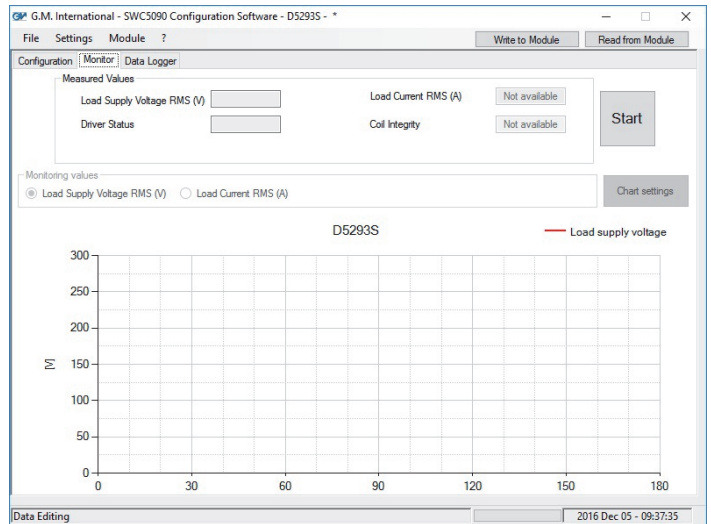
For SIL application, this field must not be checked.

Note: For advanced options and details on SWC5090, please refer to ISM0154.

Screenshots:



Configuration



Monitor